

# Outpost Packet Message Manager on Linux



Mark Phillips, NI2O March 2023

## Table of contents

<b>1 Abstract</b>	<b>2</b>
<b>2 Assumptions</b>	<b>2</b>
<b>3 Install Required software</b>	<b>2</b>
<b>4 Install Outpost Packet Message Manager</b>	<b>2</b>

## 1 Abstract

Outpost Packet Message Manager is a Windows software package capable of handling various Packet Radio email and bulletin messages. It can communicate with all the known messaging systems in use with Packet Radio today. This article explains how to install OPM onto your Linux machine. This guide is for PC only. Windows software will not run on Arm based devices such as the Raspberry Pi

## 2 Assumptions

Familiarity with Debian Linux. Redhat users may be able to use these instructions as a guide.

## 3 Install Required software

Full graphical X86 or X86-64 based Linux distro (not 'lite') (not Raspberry Pi)

PlayonLinux `'sudo apt install playonlinux'`

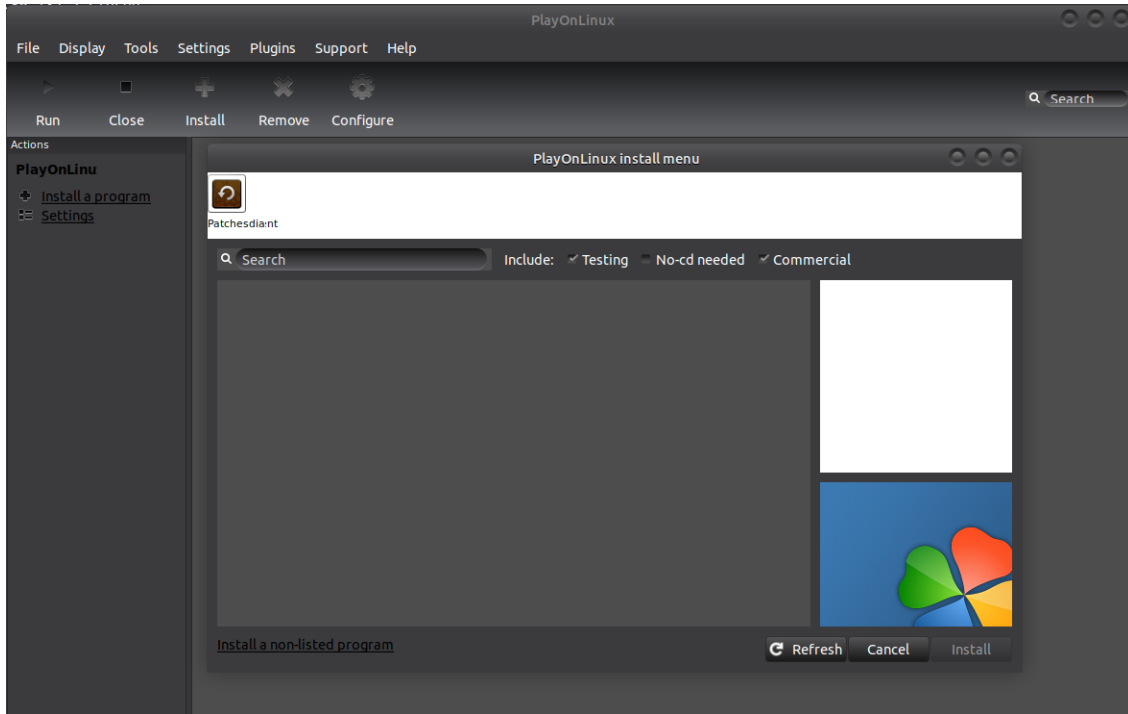
Wine32 `'sudo apt install wine32'`

Wine64 `'sudo apt install wine64'`

## 4 Install Outpost Packet Message Manager

Having installed the required software listed above download the latest Windows install file from <https://www.outpostpm.org/index.php?content=downloads>

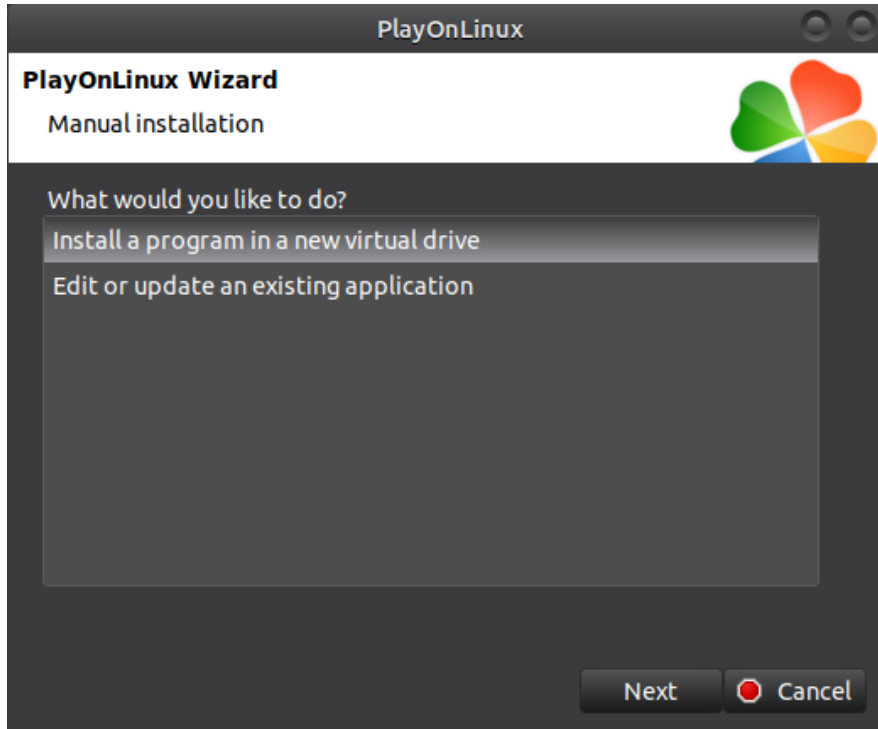
Start PlayonLinux. From the 'Actions' menu on the left side select 'Install a Program'.



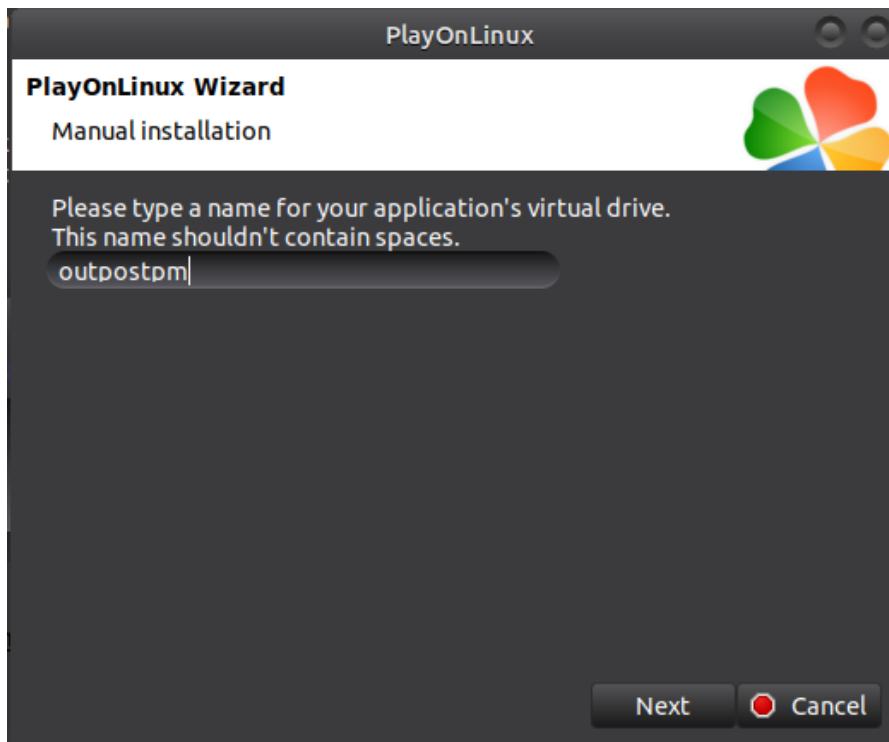
Then select 'Install a non-listed program'



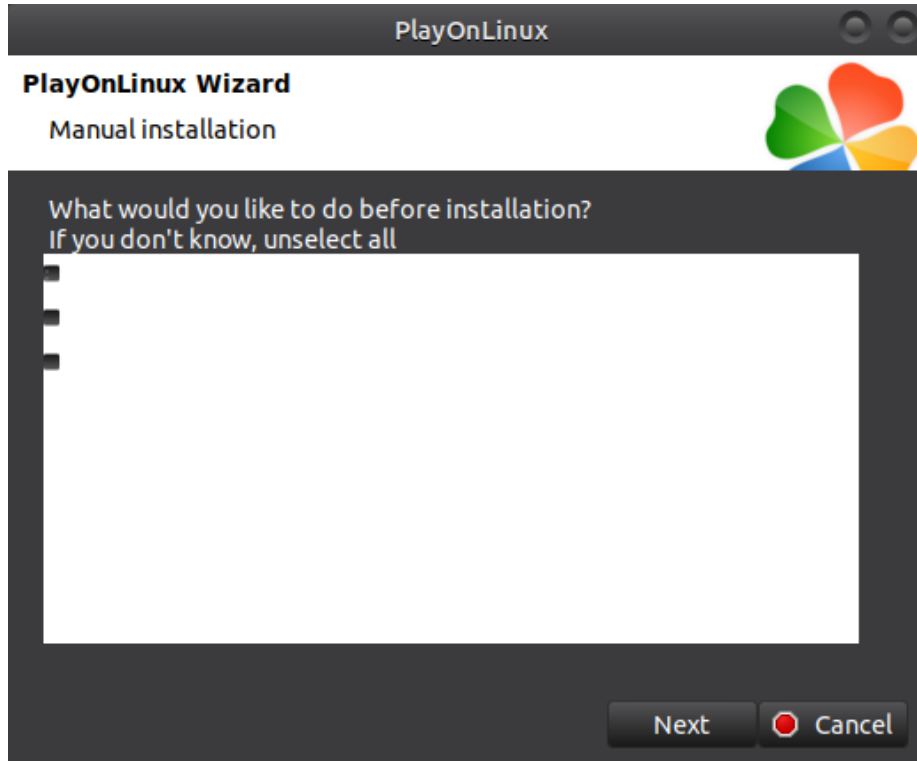
Click next



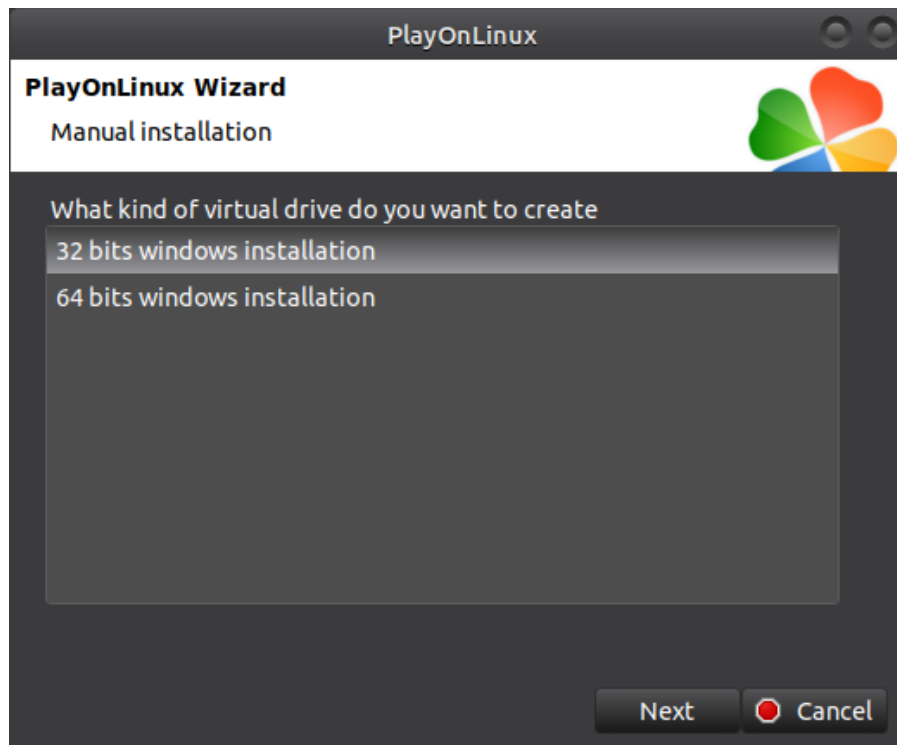
Install a program in a new virtual drive



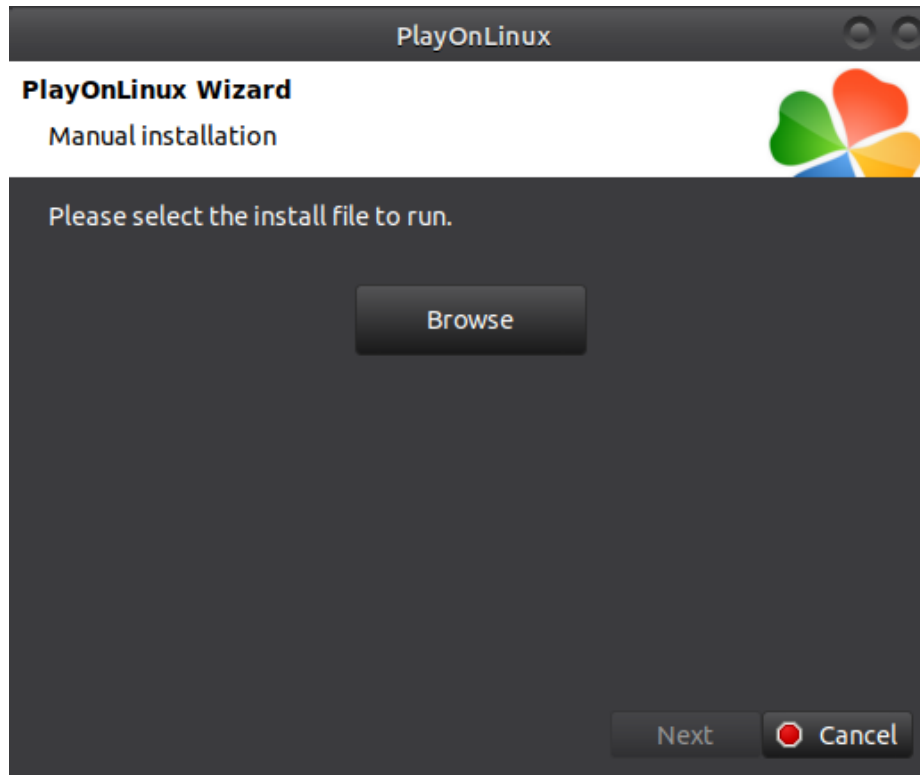
Give the virtual drive a name. Click next



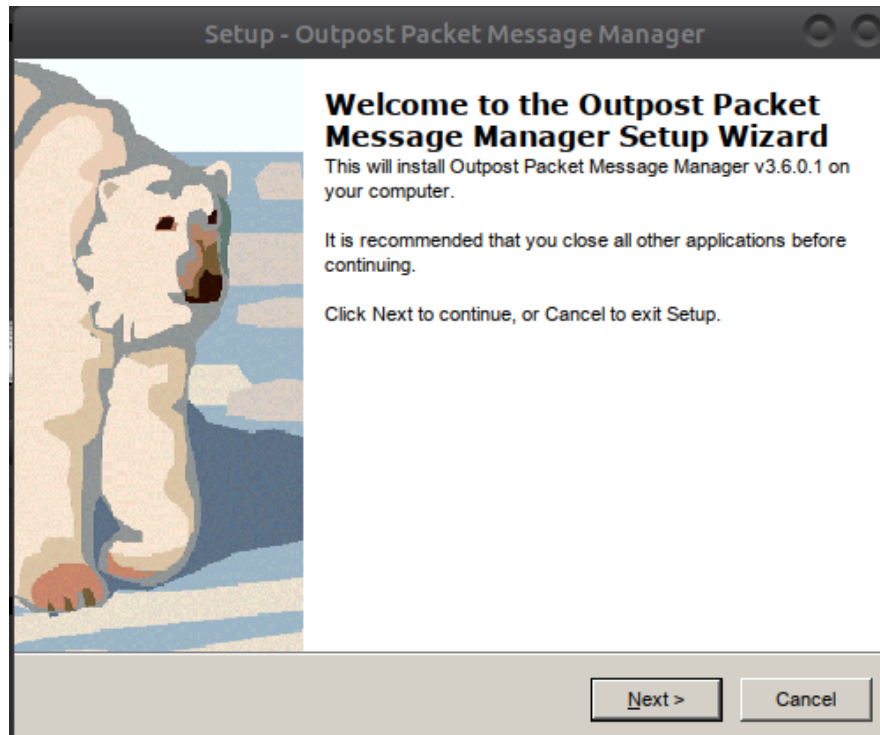
Click Next



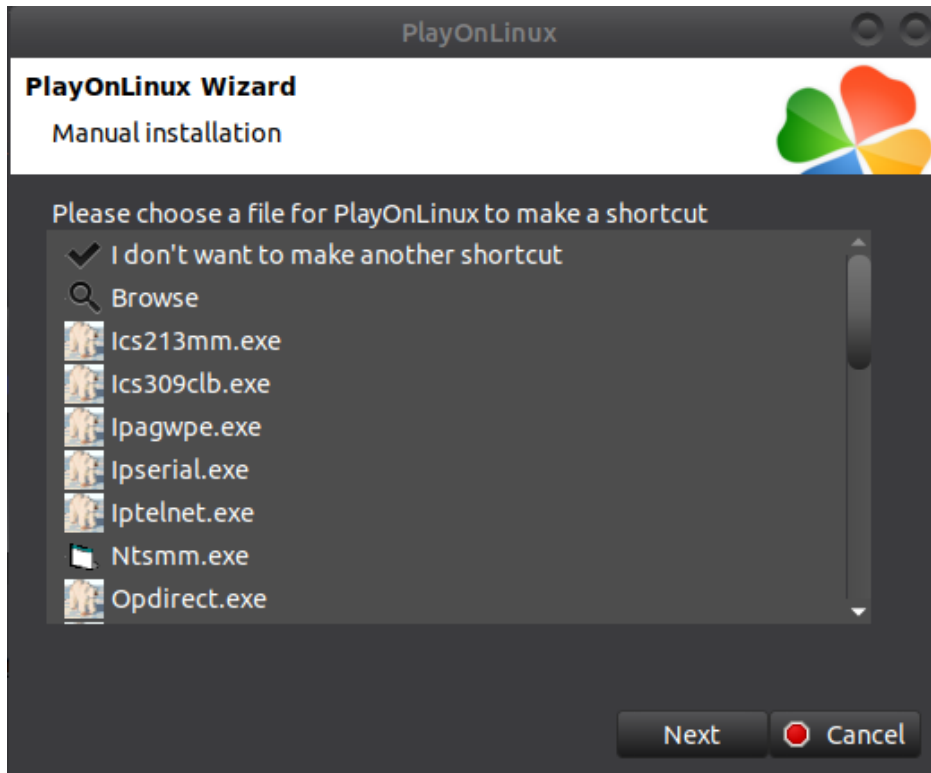
Click Next. Wait while the drive gets set up



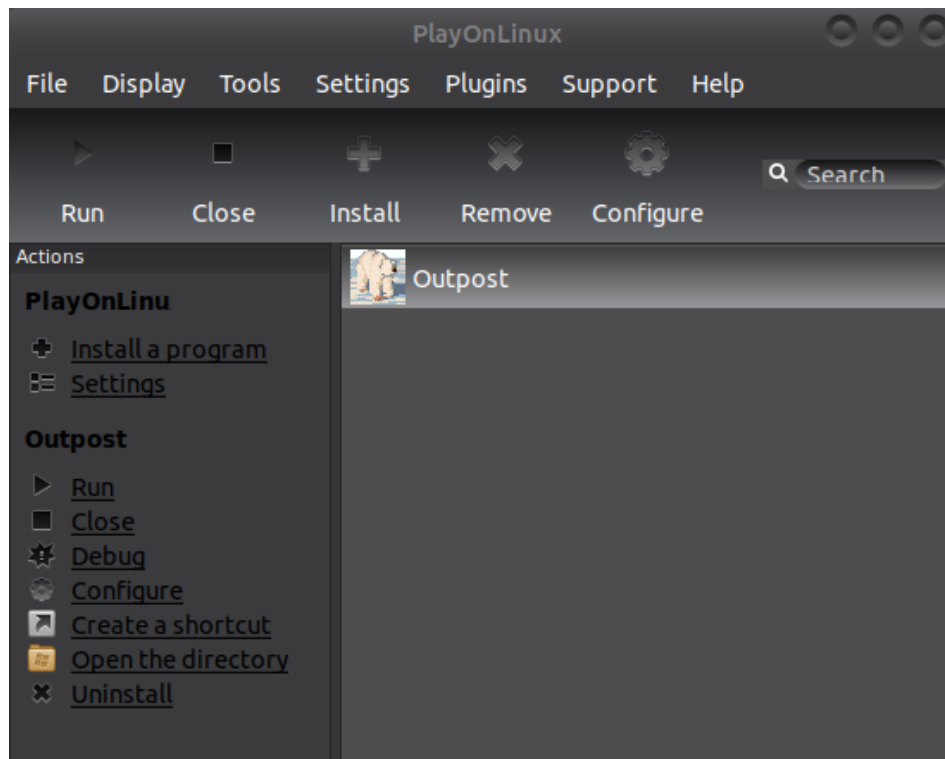
Browse to your previously downloaded Windows OPM installer file then click next



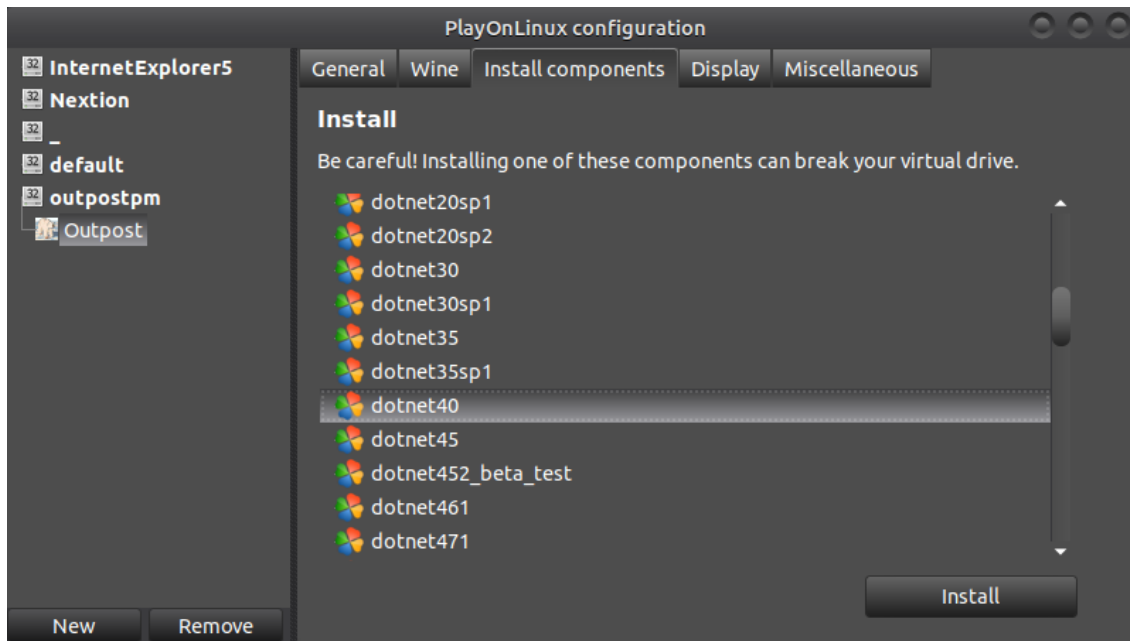
All being well the installer should fire up. Follow wizard through to the end as you would on Windows



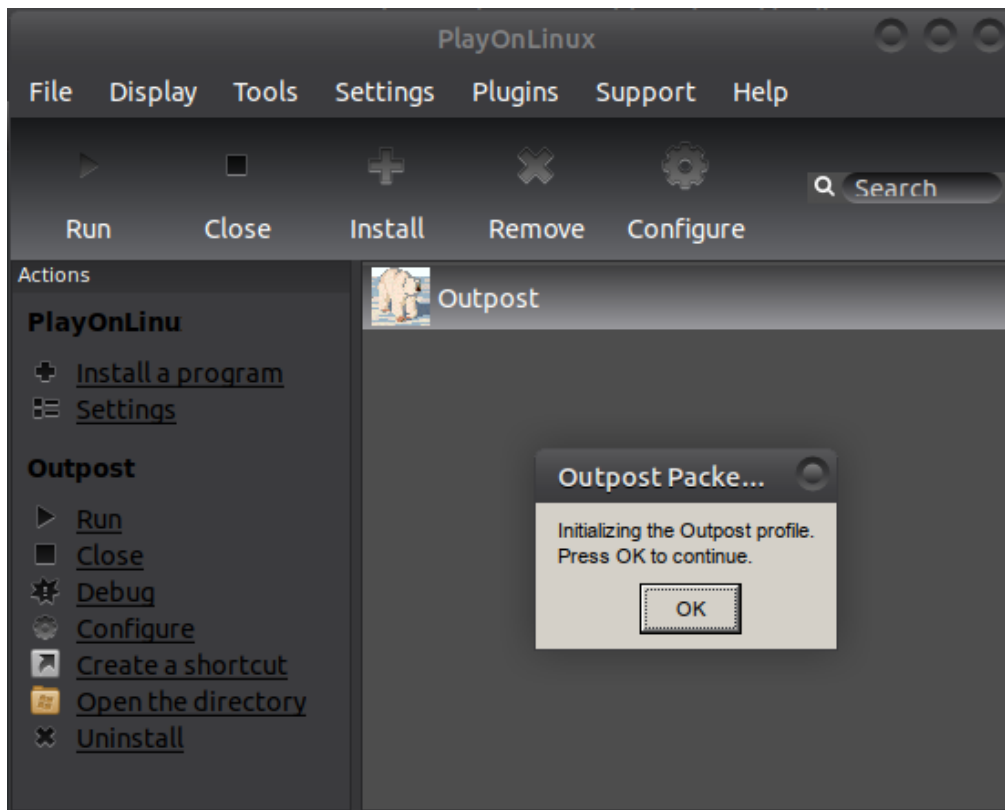
Select 'outpost.exe' from the list. Click next  
Select 'I don't want to make another shortcut'. Click next



Click on Outpost icon and then configure from the left menu



From the 'Install Components' tab select 'dotnet40' and click install. After install select 'vbrun6' then press install



Click the outpost icon and then click run from the left menu



### Station Identification

Identification | BBS Logins | Signatures

Current Profile:

**Legal**

User Call Sign:    
 User Name:   
 Message ID Prefix:  (3 Characters max)

**Tactical**

Use Tactical Call for all BBS interaction

Tactical Call Sign:    
 Additional ID Text:   
 Message ID Prefix:  (3 Characters max)

Show this form on startup

Configure Outpost as you would for Windows.

Outpost Packet Message Manager

File Edit Setup Tools Forms Actions Help

New Open Archive Delete Print Send/Receive Profile:  A A

**Folder List**

- In Tray
- Out Tray
- Sent Msgs
- Archive
- Draft Msgs
- Deleted
- Folder 1
- Folder 2
- Folder 3
- Folder 4
- Folder 5

**In Tray**

U	Type	From	To	BBS	Local ID	Subject	Date/Time	Size
		n2nov...	ni2o@w...	JNOS		Re: Second Test to NI2O at Ha...	2/21/2023 20:...	2,168
		n2nov...	ni2o@w...	JNOS		Re: test #2 from outpost	3/3/2023 16:41	89
		n2nov...	ni2o@w...	JNOS		Re: test of ax.25 email	2/21/2023 14:...	2,136
		n2nov...	ni2o@w...	JNOS		Re: test with updated rewrite	2/21/2023 13:...	206
		n2nov...	ni2o@h...	JNOS		Second Test to NI2O at HamGa...	4/8/2022 15:27	795
		n2nov...	ni2o@w...	JNOS		Test From Me	3/3/2023 16:53	801
		n2nov...	ni2o@h...	JNOS		Test Using New Hierarchical R...	4/8/2022 13:53	792

Items: 7 Unread: 7    NI2O -- JNOS -- TELNET\_JNOS (telnet)    00:00:00 23:26:13